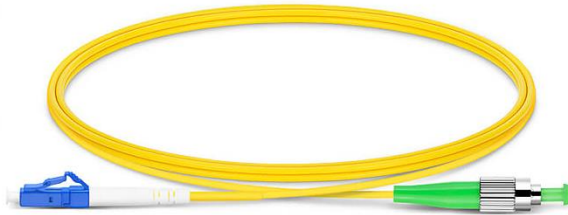


FIBER OPTIC PACH CABLE DATASHEET

LC/UPC to FC/APC Simplex OS2 Single Mode PVC (LSZH) 2.0 - 3.0mm

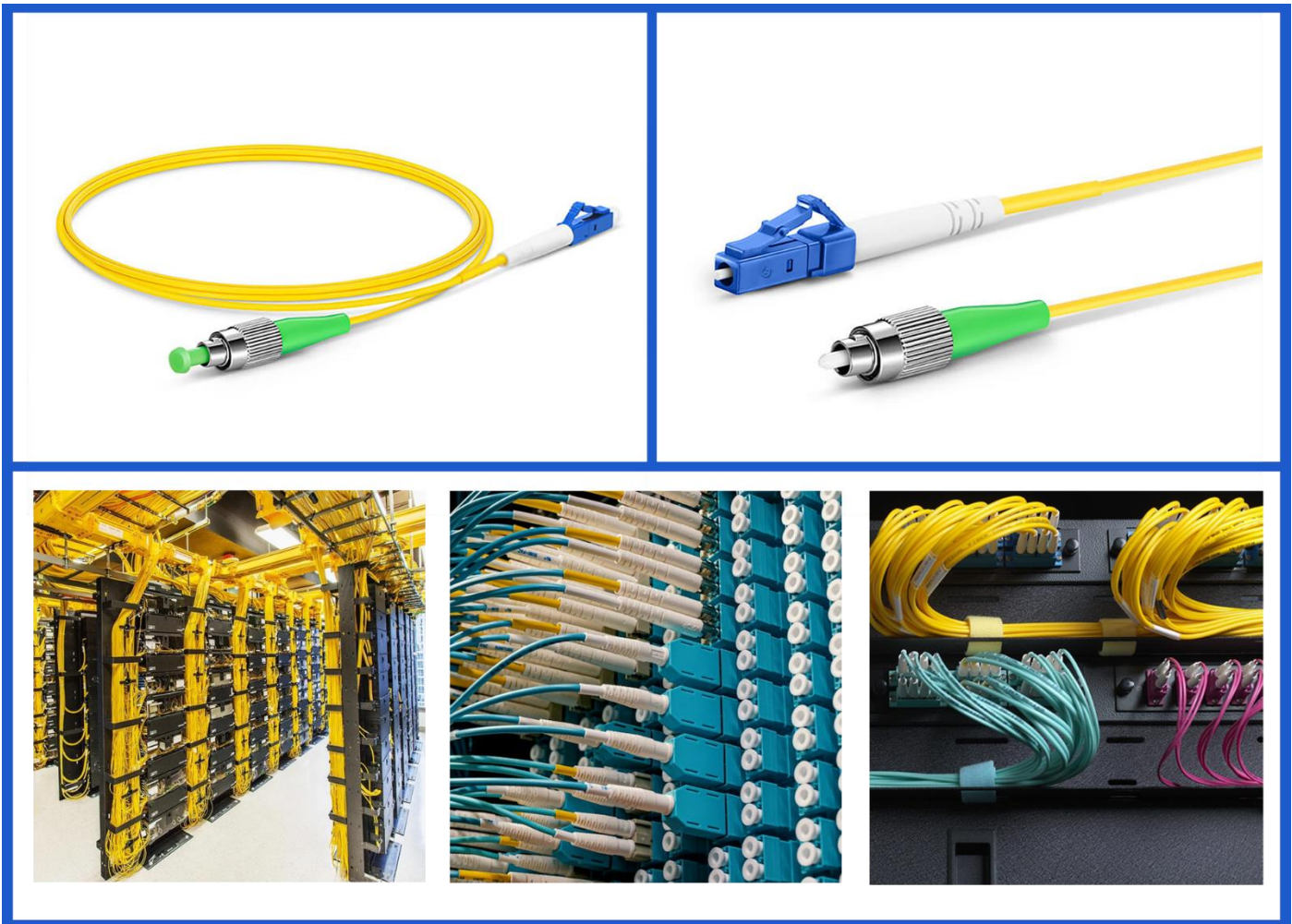
Patch Number: **MTPC-SM-LCUFCASX-xM (x = Meters)**

Application:



The 9/125 μ m OS2 single mode bend insensitive fiber optic cable is less attenuation when bent or twisted compared with traditional optical fiber cables and this will make the installation and maintenance of the fiber optic cables more efficient. It can also save more space for your high density cabling in data centers, enterprise networks, telecom room,

server farms, cloud storage networks, and any places fiber patch cables are needed. This 9/125 OS2 single mode fiber optic cable is ideal for connecting 1G/10G/40G Ethernet connections. It can transport data for up to 10km at 1310nm, or up to 40km at 1550nm.



Description

Connector Type	LCU to FCA	Polish Type	UPC to APC
Fiber Mode	OS2 9/125µm	Fiber Count	Simplex
Fiber Grade	G.657.A2	Minimum Bend Radius (mm)	30D (Dynamic/Static)
Cable Diameter	2.0 - 3.0mm	Cable Jacket	PVC
Cable Color	Yellow	Fiber Cords Structure	Single Armored, Stainless Steel Tube
Tensile Loads (Long Term)	400 N	Tensile Loads (Short Term)	600 N
Insertion Loss	≤0.3dB	Return Loss	≥50dB
Operating Temperature	-40~75°C	Storage Temperature	-45~85°C

Quality Certifications



Product Highlights



10/5D Min. Bend Radius

The G.657.A2 fiber allows tighter cable bends for slack storage and routing.



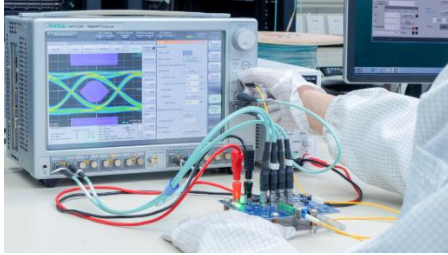
Zirconia Ceramic Ferrule

The precision ferrules can reach up to 500 times insertion lifespan.



90-150N Tensile Strength

The pull-resistant cable prevents cable breaking and prolongs the service life.

Optics Test Show**Optical Performance
Testing****Traffic Testing****Power and Wavelength
Testing****Thank You!**

Thank you customers for trusting and supporting us during the past time, we hope to continue to serve you in the future.!