

## FIBER OPTIC PACH CABLE DATASHEET

SC/UPC to LC/UPC Duplex OM2 Multi Mode PVC (OFNR) 2.0mm – 3.0mm

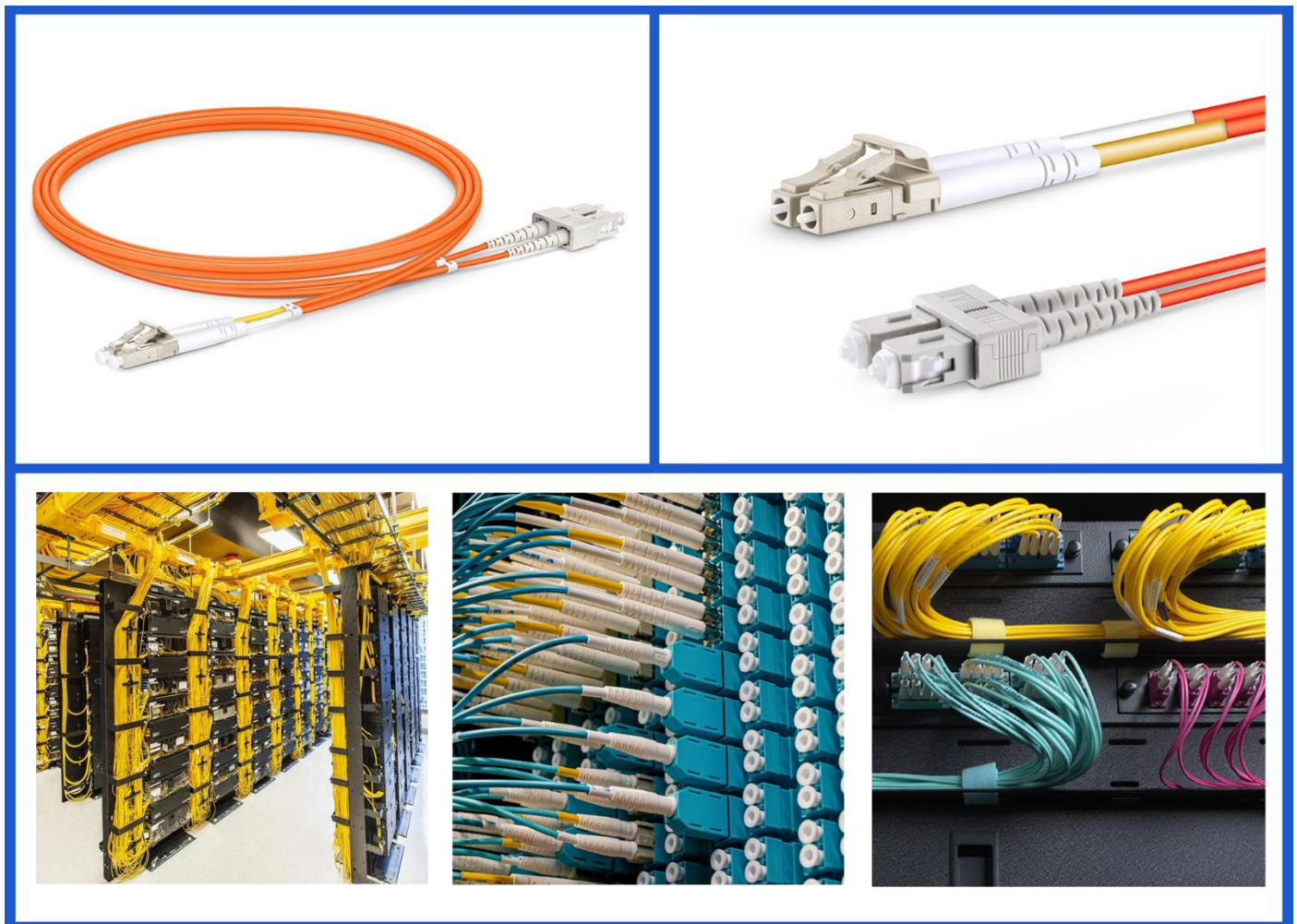
Patch Number: **MTPC-OM2-SCULCUDX-xM (x = Meters)**

### **Application:**



The 50/125 $\mu$ m OM2 multimode bend insensitive fiber optic cable is less attenuation when bent or twisted compared with traditional optical fiber cables and this will make the installation and maintenance of the fiber optic cables more efficient. It can also save more space for your high density cabling in data centers, enterprise networks, telecom room,

server farms, cloud storage networks, and any places fiber patch cables are needed. This 50/125 OM2 multimode fiber optic cable is ideal for connecting 1000BASE-SX, SFP transceivers etc. for gigabit Ethernet and fiber channel applications.



## Description

Connector Type	SC UPC to LC UPC	Polish Type	UPC to UPC
Fiber Mode	OM2 50/125µm	Fiber Count	Duplex
Fiber Grade	Bend Insensitive	Minimum Bend Radius (mm)	30D (Dynamic/Static)
Cable Diameter	2.0mm - 3.0mm	Cable Jacket	PVC
Cable Color	Orange	Wavelength	850/1300nm
Tensile Loads (Long Term)	400 N	Tensile Loads (Short Term)	600 N
Insertion Loss	≤0.3dB	Return Loss	≥30dB
Operating Temperature	-20~70°C	Polarity	A (Tx) to B (Rx)

## Quality Certifications



## Product Highlights



### 20/10D Min. Bend Radius

Bend insensitive fiber allows tighter cable bends for routing.



### Zirconia Ceramic Ferrule

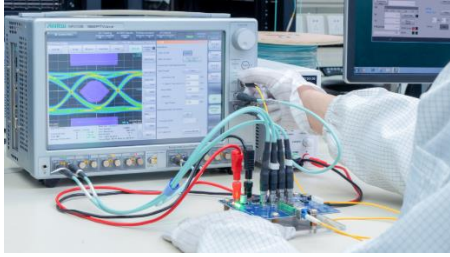
The precision ferrules can reach up to 500 times insertion lifespan.



### 90-150N Tensile Strength

The pull-resistant cable prevents breaking and prolongs the life.

**Optics Test Show**



**Optical Performance Testing**



**Traffic Testing**



**Power and Wavelength Testing**

**Thank You!**

Thank you customers for trusting and supporting us during the past time, we hope to continue to serve you in the future.!